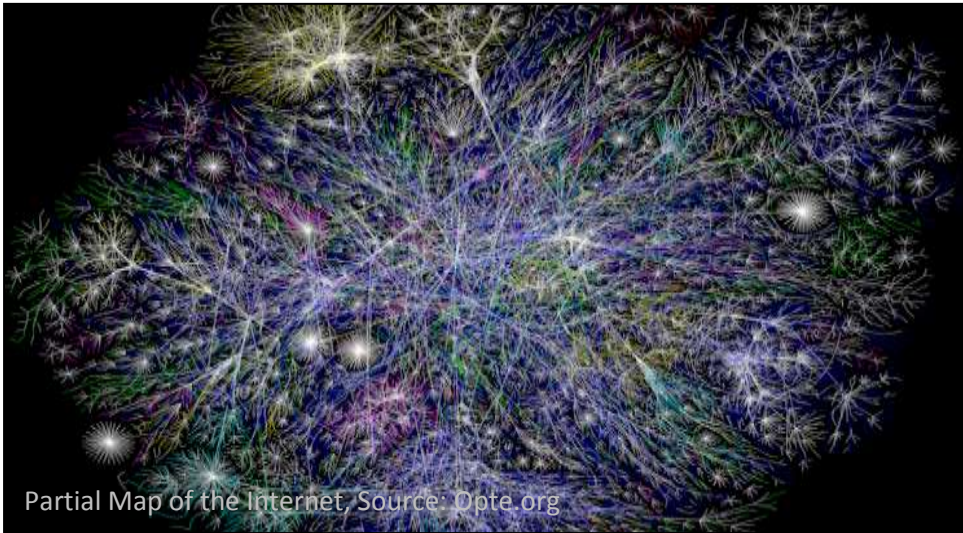


Indo-US Bilateral Workshop on Large Scale Complex Network Analysis

To be held in conjunction with IEEE International Conference on Advanced Networks and Telecommunications Systems (ANTS)

Website: <http://www.ieee-comsoc-ants.org/cfw.html>

Venue: Indian Statistical Institute, Kolkata, December 19-20, 2015



Partial Map of the Internet, Source: Opte.org

Innovations in the next generation of network systems, together with explosive growth of the Web, Cloud and Mobile Computing, Big Data Science and Social Networking as well as Internet of Things, have resulted in a plethora of new applications and services. Various organizations, government agencies, and application service providers foresee that in the next few years, modelling and analysis of these kinds of large complex networks to achieve reliability, performance guarantee, robustness and security will be extremely important for both enterprises and end users. Hence, all these recent developments have created a great opportunity for *Analysis of Large Scale Complex Networks*.

In order to analyze large scale complex networks, a multi-disciplinary approach is needed with techniques from computer networks, graph theory, distributed algorithms, social network analysis, and so on. Hence analysis of large scale complex networks poses significant challenges to the research community.

This bilateral workshop will serve as a platform to bring together leading researchers from academic institutions, R&D organizations, and practicing professionals from US and India for exchange of ideas and to Discuss state-of-the-art approaches to important problems and disseminate results of current research. Another important role of this workshop will be to train and motivate students and research scholars to work in this area to build up a strong pool of researchers in coming days.

Topics

Modelling of Graph Structures for Large Scale Complex Networks

Distributed Algorithms for Large Scale Complex Networks

Internet of Things and Large Scale Complex Networks

Next Generation Large Scale Complex Networks

Analysis of Large Scale Social Networks

Machine Learning and Analytics for Large Scale Complex Networks

Academic Sponsor:
ISI Kolkata



Technical Sponsor:
IEEE Kolkata



Key Features

- Eminent scientists from USA and India will deliver presentations
- Government and industry experts will give talks on the needs of the industry
- Various researchers from multi-disciplinary subjects ranging from Graph Theory, Algorithms, Statistics, Computer Networks, Data Science, Social Networking, etc. will participate in the panel discussions
- Great opportunity for Masters and Ph.D. students to learn about the current state-of-the-art research
- Abstracts are solicited from domain experts to cover current topics directly relevant to the workshop. For details see: <http://www.ieee-comsoc-ants.org/cfw.html>
Submission Deadline: Aug. 15, 2015
Acceptance Notification: Sept. 30, 2015

Advisory Committee

Raj Jain

Washington University, St. Louis

Bimal Roy

Indian Statistical Institute

Prasant Mohapatra

University of California, Davis

Biswanath Mukherjee

University of California, Davis

Prithviraj Banerjee

Accenture

Program Committee

Mandar Mitra

Indian Statistical Institute

Reza Zadeh

Stanford University

Michael Q. Rieck

Drake University

Niloy Ganguly

IIT Kharagpur

Krishnendu Mukhopadhyaya

Indian Statistical Institute

A. L. Narasimha Reddy

Texas A & M University

Sanjoy Paul

Accenture

Organizing Chairs

Subhankar Dhar

San Jose State University

Nabanita Das

Indian Statistical Institute